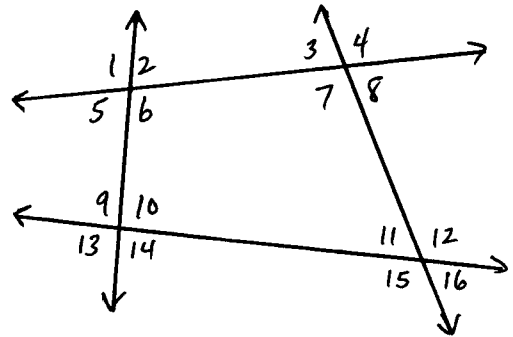
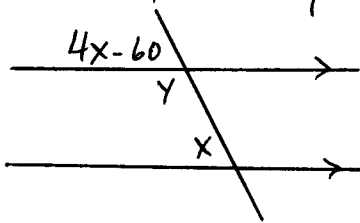


REVIEW PROBLEMS (3-1 thru 3-4)

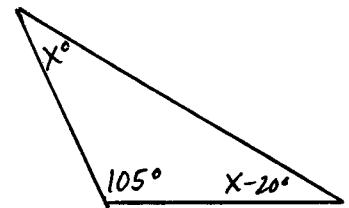
1. Name each pair of angles:
- | | |
|--------------------------------|--------------------------------|
| a. $\angle 1$ and $\angle 9$ | e. $\angle 9$ and $\angle 11$ |
| b. $\angle 1$ and $\angle 6$ | f. $\angle 10$ and $\angle 11$ |
| c. $\angle 2$ and $\angle 3$ | g. $\angle 13$ and $\angle 10$ |
| d. $\angle 11$ and $\angle 12$ | h. $\angle 14$ and $\angle 11$ |



2. Find x and y :

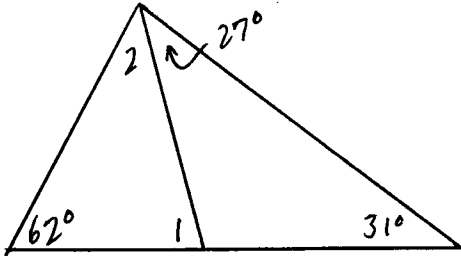


3. Find x :

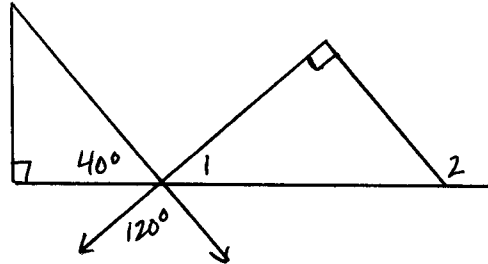


Find the $m\angle 1$ and $m\angle 2$:

4.



5.



Find the interior angle sum of the following:

6. Hexagon

7. Nonagon

Complete the chart for regular polygons:

	Number of Sides	EACH Exterior Angle	EACH Interior Angle
8.	6		
9.		30°	
10.			160°

ANSWERS

1. a - Corr \angle s e - Corr \angle s
b - Vert \angle s f - ss int \angle s
c - ss int \angle s g - Vert \angle s
d - adj \angle s h - alt int \angle s

2. $X = 20$
 $Y = 160$

3. $X = 47.5$

4. $m\angle 1 = 58^\circ$
 $m\angle 2 = 60^\circ$

5. $m\angle 1 = 20^\circ$
 $m\angle 2 = 110^\circ$

6. 720°

7. 1260°

8. Ext $\angle = 60^\circ$
Int $\angle = 120^\circ$

9. #sides = 12
Int $\angle = 150^\circ$

10. #sides = 18
Ext $\angle = 20^\circ$