

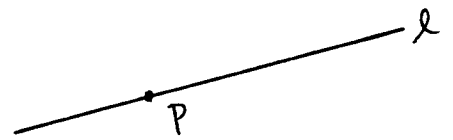
REVIEW PROBLEMS (3-5 thru 3-7)

1. Given $A(-2, 5)$ and $B(6, -4)$, find the slope of \overleftrightarrow{AB}

2. Graph $x + 2y = 5$

3. Write the equation of a line (in standard form) perpendicular to $x + 2y = 3$ and passing through $(-4, 1)$

4. Construct a perpendicular to l through P :



5. Construct a perpendicular to m through A :

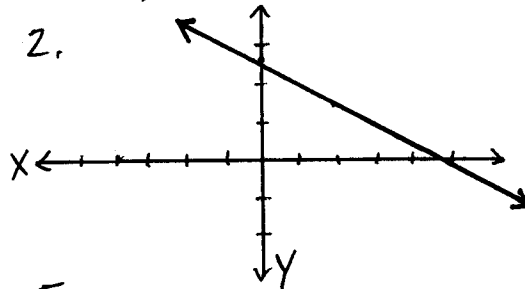
6. Construct a parallel to k through T :



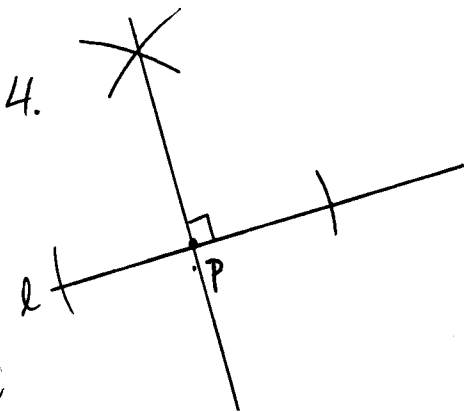
★ ANSWERS ★

1. $m = -\frac{9}{8}$

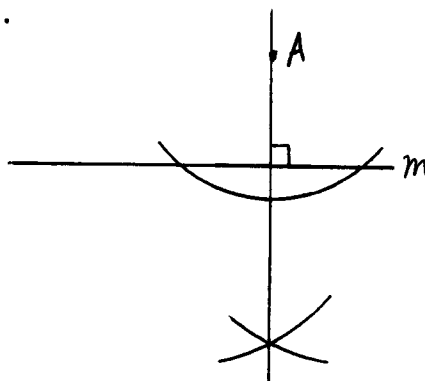
2.



3. $2x - y = -9$



5.



6.

